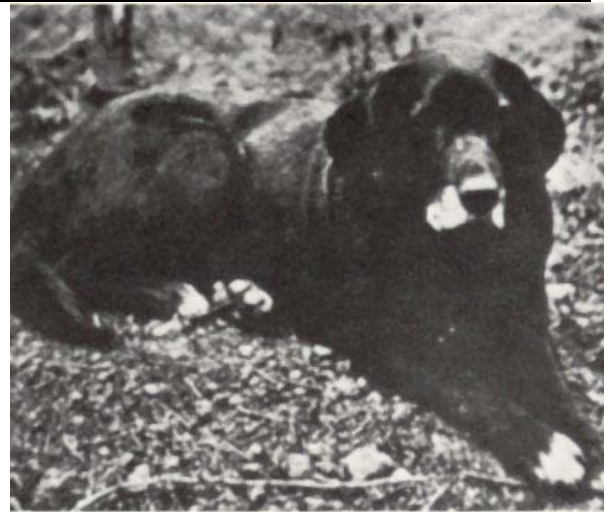


Pictorial History of Labrador Retriever



The last two original St. John's dogs (Newfoundland Water Dogs) This picture was taken at the remote fishing village of Grand Bruit Newfoundland about 1980. At that time, Lassie (on the right) was 13 years old and his brother on the left was 15 years old. In the early 1800's the ancestors of these dogs were imported by the 2nd Earl of Malmesbury, who started the first Labrador kennel in England, and the 5th Duke of Buccleuch who started the first kennel of Labradors in Scotland about 1835.



The earliest photograph of a Labrador is that of the 5th Duke of Buccleuch's bitch, Buccleuch Nell, taken in 1856 when Nell was 12 years old.



Buccleuch Avon, born 1885. Owned by the 6th Duke of Buccleuch, Avon is said to be the ancestor of all British Labradors.



FTW Buccleuch Oak belonging to the 10th Duke of Buccleuch. Oak is of the original strain of Labrador maintained at Buccleuch Gundog Kennels since the early 1800's. He is out of Buccleuch Gem and sired by Garendon Mark of Pocklea. The photograph was taken in 2009 at Drumlanrig Castle, Queensberry Estate, Scotland.

Duckhill Kennels occasionally offers for sale puppies from select British Labrador Bitches bred to Buccleuch Oak. These puppies are of the original strain of Labrador Retriever maintained by the Dukes of Buccleuch since the early 1800's.

Robert Milner
Duckhill Kennels
350 Bailey Morrison Dr
Somerville TN 38068
(901) 428-6694
www.duckhillkennels.com